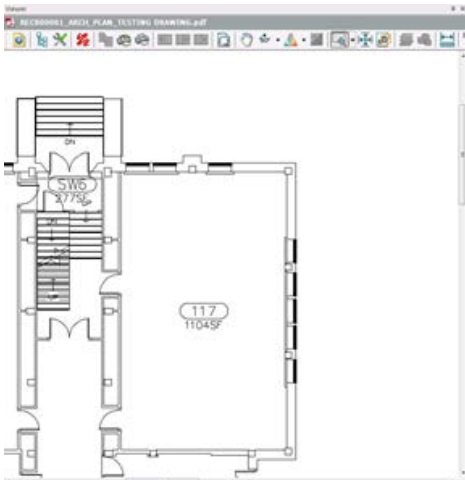
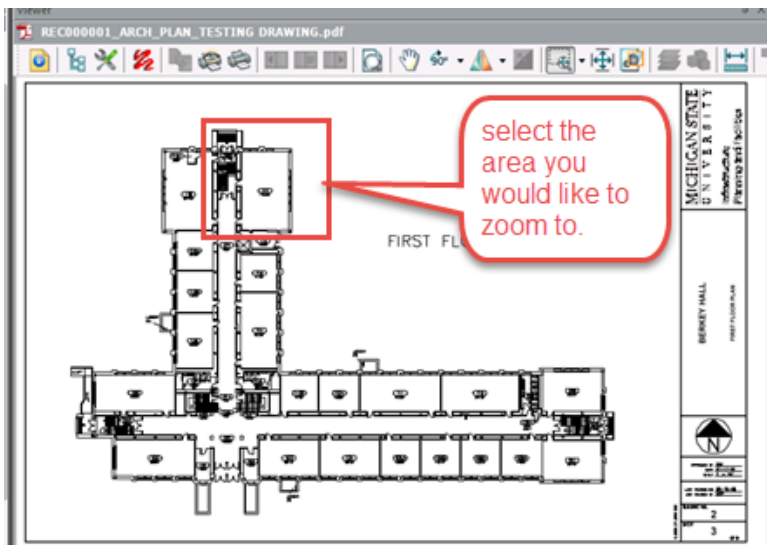
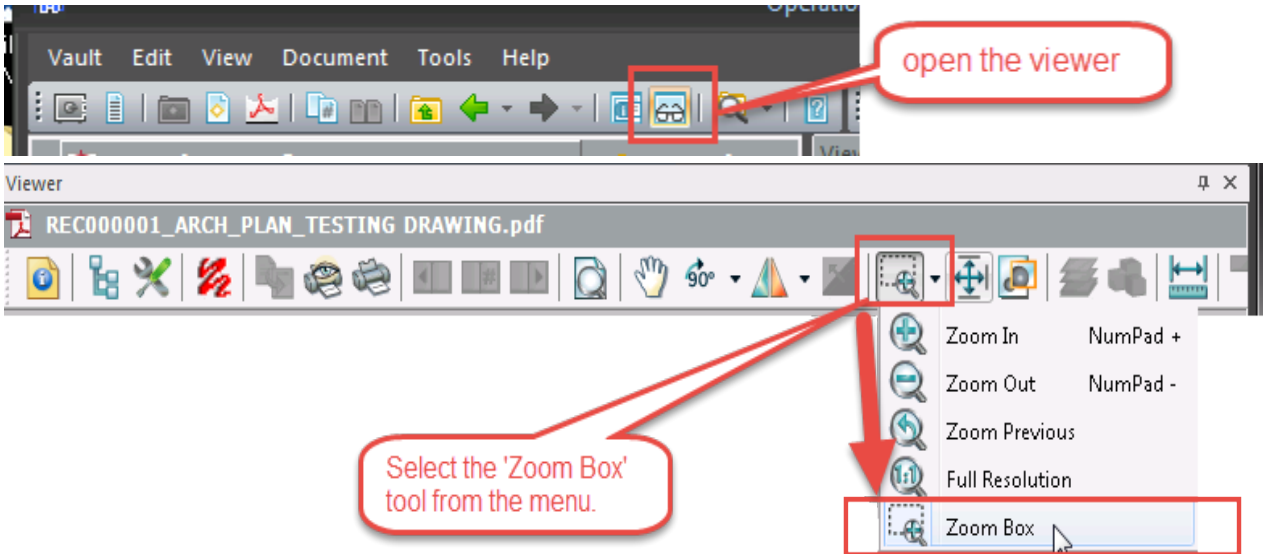




Printing a ZOOMED in portion of a drawing



1. Open the drawing using the **MERIDIAN** viewer (**DO NOT** DOUBLE CLICK ON THE FILE!!!)
 - a. Make sure you are using the AutoVueWebViewer... for further instructions on viewer set-up, please reference your training manual.





Printing a ZOOMED in portion of a drawing



2. Printing the Drawing Portion

Viewer
REC000001_ARCH_PLAN_TESTING DRAW

click on the printer icon

Print Document

Printer
Name: \\PPS-PRINTSRV\OCEPLOT Properties
Status: Ready
Type: Océ ColorWave 650
Where: OCEPLOT:TDS700
Comment: Océ ColorWave 650, toner monitored by

Advanced
 Print redlines
 Print all in black

Options... OK Cancel

select the correct printer and properties.

open the 'Options' menu.

Print Properties

Options Margins Pen Settings

Printer
Printer: \\PPS-PRINTSRV\OCEPLOT

Scaling
 Fit to page Scale 100%
 Factor 1 Drawing units per 1 Inch

Document Pages
 All
 Current
 Range From 1 To 1

Page Area
 Extents
 Displayed
 Limits

Native settings (from file)
 Output a single page
 Skip Blank Pages
 Print Notes
 Print One Note Per Page
 Print Row Headers
 Print Column Headers

Partial Preview OK Cancel Help

select 'Displayed', then click 'OK'

Print Document

Printer
Name: \\PPS-PRINTSRV\OCEPLOT Properties
Status: Ready
Type: Océ ColorWave 650
Where: OCEPLOT:TDS700
Comment: Océ ColorWave 650, toner monitored by

Advanced
 Print redlines
 Print all in black

Options... OK Cancel

click 'OK'